



Webinars for Cold Chain Professionals

FOOD SECURITY WEEK DAY 2: ENSURING FOOD
SAFETY & TACKLING MODERN SLAVERY IN THE
COLD CHAIN

STARTING AT 10:30AM

SUPPORTED BY:



FOOD SECURITY WEEK

16 – 20 MAY 2022



Mark Brown
Global Managing Director
Digital Trust Consulting
BSI



National Cyber
Security Centre



Jay Tahasildar
Managing Director
Mercurius IT



Sean Daly
Relationships Manager
National Food Crime Unit



Rachel Ward
Managing Scientist
Exponent International Ltd



Hannah Lerigo-Stephens
Business Liaison Manager
Stronger2gether

Food crime, cyber crime and modern slavery - how can cold chain businesses protect themselves from the risks?

2 live webinars plus blogs and videos released throughout the week

www.coldchainfederation.org.uk/events/

SUPPORTED BY



TOM SOUTHALL
POLICY DIRECTOR
COLD CHAIN FEDERATION





APRIL 25, 2022

New research finds boardrooms must still do more to eradicate modern slavery

by Lancaster University



Delays to food safety import controls 'leave door open for criminals'

By James Ridler

17-Mar-2021 - Last updated on 19-Mar-2021 at 11:03 GMT



THE GROCER BLOG: DAILY BREAD

By George Nott | 28 January 2021 | 3 min



FOOD SAFETY SERIES

ENSURING FOOD SAFETY
IN THE COLD CHAIN

FS1 / 2021 / ISSUE 1

COLD CHAIN
COMPLIANCE


SCHEDULE

10:35 – 10:50	Current trends and risks in food security	
10:50 – 11:10	Balancing food safety and sustainability	
11:10 – 11:30	Modern slavery in supply chains	





File View Help



Audio

Sound Check  ?

☒ Computer audio
☐ Phone call
☐ No audio

Microphone Array (Conexant SmartA... ▼

Speakers (Conexant SmartAudio HD) ▼


Talking: **Shane Brennan**

Questions

[Enter a question for staff]

Send

CCF - COVID 19 - INTELLIGENCE EXCHANGE
Webinar ID: 308-161-843

 GoToWebinar

CURRENT TRENDS & RISKS IN FOOD SAFETY



SEAN DALY, RELATIONSHIP
MANAGER, NFCU

BALANCING FOOD AND SUSTAINABILITY

The Exponent logo is centered within a white rectangular box. The logo itself consists of the word "Exponent" in a teal-colored serif font, with a registered trademark symbol (®) at the end. The 'x' in "Exponent" is stylized with a superscript-like 'x'.

DR RACHEL WARD, MANAGING SCIENTIST,
EXPONENT INTERNATIONAL LIMITED

Exponent[®]

Engineering & Scientific Consulting



Polymers & Biomedical

- Biomedical Engineering & Sciences
- Polymer Science & Materials Chemistry



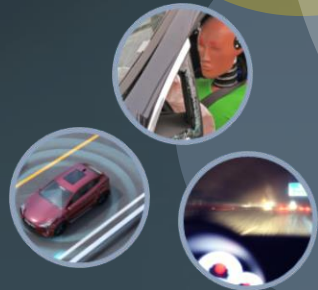
Mechanical & Thermal

- Thermal Sciences
- Mechanical Engineering



Transportation

- Biomechanics
- Human Factors
- Vehicle Engineering



Electrical & Data Sciences

- Electrical Engineering & Computer Science
- Data Sciences

PROJECTS



Environmental Sciences

- Ecological & Biological Sciences
- Environmental & Earth Sciences



Health Science

- Chemical Regulation & Food Safety
- Health Sciences



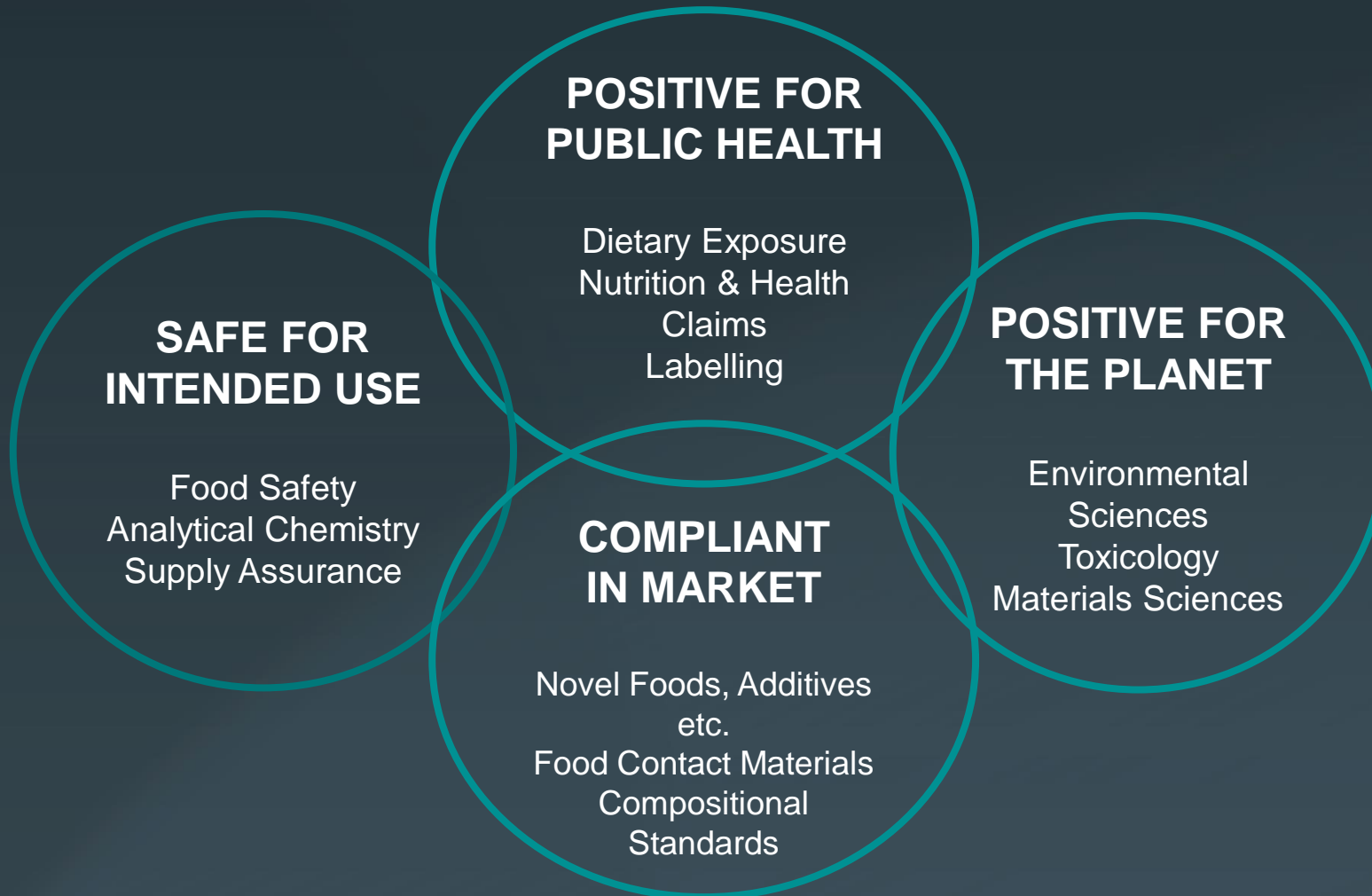
Infrastructure & Materials

- Buildings and Structures
- Civil Engineering
- Construction Consulting
- Material & Corrosion



CHEMICAL REGULATION & FOOD SAFETY

Food Safety, Nutrition and Regulatory Affairs Group



FOOD RISK MANAGEMENT

Pre- and post-market incl. allergen, microbiology, chemical and physical risk assessment and assurance

REGULATORY & SCIENTIFIC AFFAIRS

Incl. pre- and post-market government liaison, pre-market authorisation, product compliance evaluations and incident management

ANALYTICAL CHEMISTRY

With a focus on food contact materials compliance evaluation pre- and post-market

DIETARY EXPOSURE & NUTRITION

Incl. nutritional and health claims support, and dietary exposure / intake assessments

Environmentally Sustainable Food Systems

- **Producing food requires resources** (land, water, energy, fuel) and creates by-products and waste - some of which can adversely impact the environment
- The global food system - from production through processing, transport, and packaging, to consumption - accounts for **~one-third of total global greenhouse gas emissions.**
- Food system operators are under increased pressure from the public, investors, and regulators to develop more environmentally sustainable practices.
- Scrutiny is likely to increase - at COP26, nations renewed their commitment to implementing national plans with 2030 emissions reductions targets to reach net zero by mid-century.

Transparency of Environmental Impact

- **Eco-labels** likely to be a key mechanic
 - To inform consumers of individual food products environmental impact
 - To provide a basis for companies and governments to set measurable environmental sustainability goals for sourcing.
- **Environmental impact clauses** likely in future commercial contracts
 - Targeting climate change awareness in decision-making processes
 - Setting specific carbon emission goals.
- Compliance to the above will be main drivers for setting environmental impact performance goals
- **Accurately quantify environmental impacts** - or risk being unable to describe status or meet requirements
 - Integrative, systematic approaches for evaluating specific operational impacts and overall supply chain impacts
 - Accurate quantification of often invisible operational inputs and outputs, including those from upstream and downstream processes
- **No “One Size Fits All”**
 - Environmental impact from individual operations/sites may differ widely and result from different factors for each site/operation type
 - Obtaining accurate data - and identifying most impactful initiatives - requires a customized, integrated approach utilizing systems analysis

Public Health vs. Planetary Health

In-depth understanding of impacts of positive environmental initiatives and their implications for food safety **avoids unintended consequences**

Reduce Energy Use

Lower temperature cooking
Higher temperature chilling/freezing
No air conditioning

Pathogen kill step? / Prevention of pathogen growth?
Shelf stability?
Seasonal temperature/humidity fluctuations in operations?

Reduce Packaging Waste

Thinner packaging
Recycled packaging
Novel packaging materials
No packaging

Product integrity protection? (foreign matter, pathogens, etc.)
Pathogen growth control? (protective atmosphere, moisture barrier, etc.)
Shelf stability?
Food contact suitability of new packaging? (taint, toxic chemical migration, etc.)

Reduce Water Use

Recycling water
Waste water
Less water use

Hygiene effectiveness?
Closed system - build up of contaminants/residues? biofilms?
Food contact suitability of water used in sanitation?

Avoiding Unintended Consequences

- **Consult** - Multidiscipline cross-business teams; need environmental impact expertise
Explore together any potential for issues arising in production, shipping/storage, and in market
- **Characterize** - Define performance parameters and agree targets for acceptance
Production efficiency (speed of line, waste, hygiene, handling, storage space etc.), logistics and storage robustness, environmental sustainability criteria to support eco-label or commercial contract, regulatory compliance requirements, food safety criteria, shelf-life stability, consumer acceptance
Is it safe, legal, fit for purpose?
- **Model** - Utilise multidisciplinary modeling to interpret outputs; Conduct systems analysis
Fully analyse assessment outputs, and translate findings into scenario-specific actions that reduce environmental impacts without unintended consequences;
Identify first steps which will have the biggest impact on their business with least cost or disruption.
- **Validate and Verify** - Be thorough; Actively monitor status in this fast-moving area



Dr Rachel Ward

rward@exponent.com

+ 44 (0) 7879 646358

www.exponent.com



MODERN SLAVERY IN SUPPLY CHAINS



HANNAH LERIGO-STEPHENS,
BUSINESS LIAISON MANAGER,
STRONGER TOGETHER



Responsible recruitment

Fair work

Free from exploitation

Tackling modern slavery and labour exploitation in Warehousing and Logistics

Hannah Lerigo-Stephens

stronger together

- An **impact driven** not-for-profit
- A world where all workers are **recruited responsibly** and have **fair work free from exploitation**
- **Practical** and **accessible** guidance, training, tools and bespoke support
- **Collaborative country** and **sector specific** supply chain programmes



Brands and organisations we partner with:



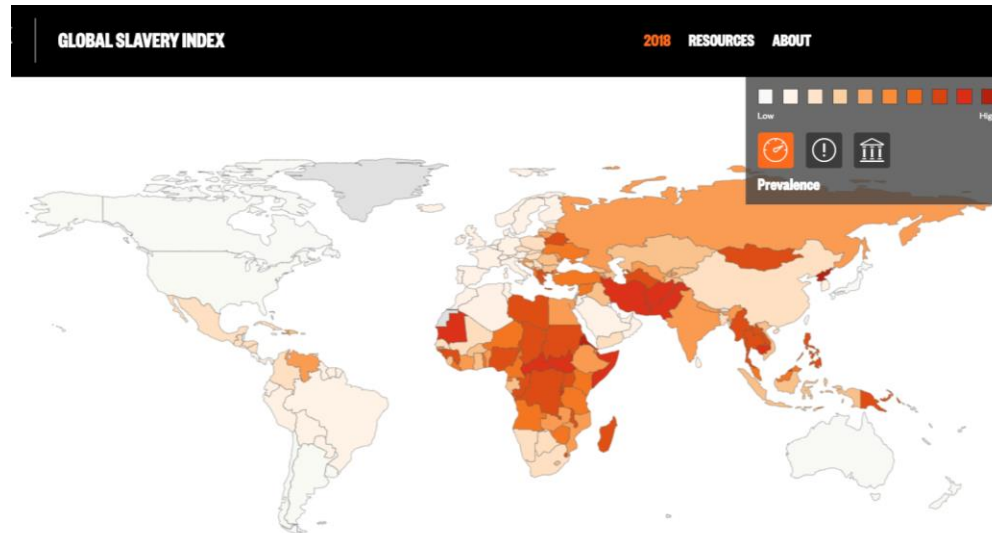
Modern slavery – *the global outlook*

- Slavery was abolished but not eradicated
- 40 million people in slavery globally:

- **25m in forced labour**

*It doesn't discriminate and
anyone can become a
victim...*

*...but certain vulnerabilities
make it more likely*



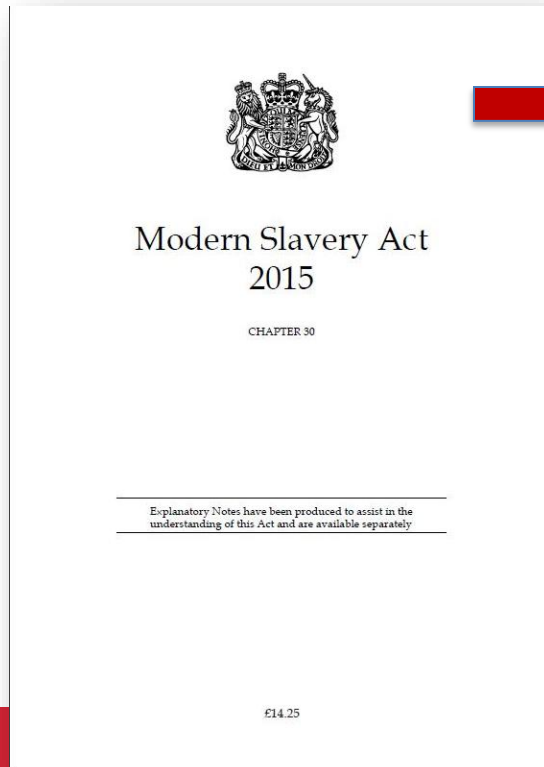
[Global Findings | Global Slavery Index](#)

Walk Free & Minderoo Foundation

- **Fastest growing** criminal industry in the world
- Second **most profitable** criminal industry to drugs

And in the UK...

- Modern Slavery Policy Unit 2020: **“at least 100,000 victims in the UK, with the actual number likely to be even greater”**
- 2021 – 12,727 (2020: 10,613) Potential Victims referred into the UK Government’s system for supporting potential victims of modern slavery – the National Referral Mechanism (NRM)



Annual **Modern Slavery Statements** mandated for all businesses with a turnover of £36m+

“It is simply not acceptable for any organisation to say, in the twenty-first century, that they did not know.”

(Theresa May)

What about warehousing and logistics?

- The UK Director of Labour Market Enforcement previously identified Warehousing as a 'high risk sector for labour abuse'
- The sector is characterised by low pay, exacerbated as the sector shifts from an 'industrial' to a 'service' sector
- Flexibility lies at the heart of sector hence reliance on labour agencies is common
- Reliance on a migrant workforce in temporary and outsourced roles, with a sometimes insecure job status
- The use by some of so-called 'dark' warehouses and storage facilities
- Particular H&S risks (chilled environment and machinery operation)
- Discovery of clandestine migrants in loading bays/lorries
- Uncertainty around whether use of GLAA licenced labour providers is required depending on product

Case studies

Sports Direct modern slavery brothers jailed

23 January 2017



NOTTINGHAMSHIRE POLICE

Erwin and Krystian Markowski have both been sentenced to six years in prison for modern slavery

Two brothers who trafficked 18 people from Poland to the UK and conned and threatened them have been jailed.

Erwin and Krystian Markowski, both from Nottingham, recruited the vulnerable men to work at the Sports Direct warehouse in Shirebrook, Derbyshire.

Unseen's Annual Assessment 2020

"The Helpline has seen a steady increase in the number of cases from logistics and transportation with 34 cases in 2020 up from 24 in 2019, almost a 42% increase."

3 suspects arrested by GLAA in May 2019, on suspicion of modern slavery and human trafficking offences within a Logistics company in Birmingham.



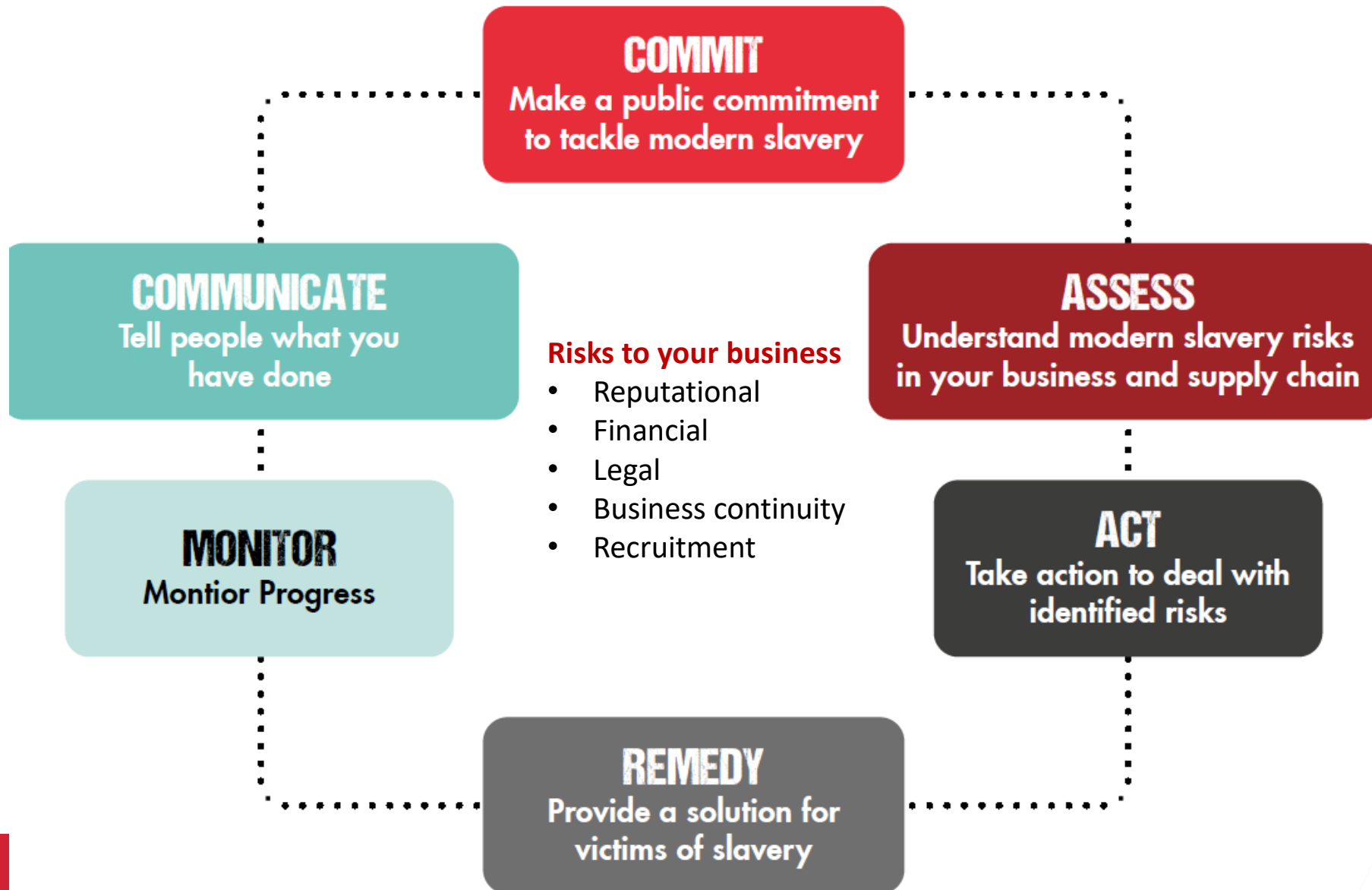
GLAA officers supported by West Midlands Police made the arrest

Spotting the signs

- Physical appearance/neglect
- Isolated/avoids contact
- Poor living conditions
- Few personal possessions
- Restricted freedom of movement
- Reluctant to ask for help



How to respond...



How Stronger Together can help

Supporting UK businesses to take their next steps in the implementation of their tackling modern slavery programmes to ensure they remain robust and effective

84% of respondents felt the programme had either fulfilled or significantly fulfilled their needs

94% of respondents either strongly agreed or agreed that engagement with the programme had led to the business taking steps to reduce risks of modern slavery

73% of respondents reported that they had senior management commitment to tackling modern slavery as a **result of engaging** in the programme



Coming soon!

“Tackling Labour Exploitation in the UK Warehousing Sector”

Practical training workshop for anyone responsible for tackling modern slavery - from policy to implementation including **HR, CSR, technical and operational** managers

Our full day training delivered by experts will cover:

- what modern slavery, forced labour and hidden labour exploitation is
- the potential risk and impacts of labour exploitation to your warehousing operations and the business case for tackling it
- how to recognise the signs that someone may be being exploited and how to respond
- Your next steps to deter, detect and deal with it in your business and operations and the tools you need to implement what you've learnt

Interested in knowing more? Keep in touch info@stronger2gether.org



You may choose to look the other way but you
can never again say you did not know.

(William Wilberforce)

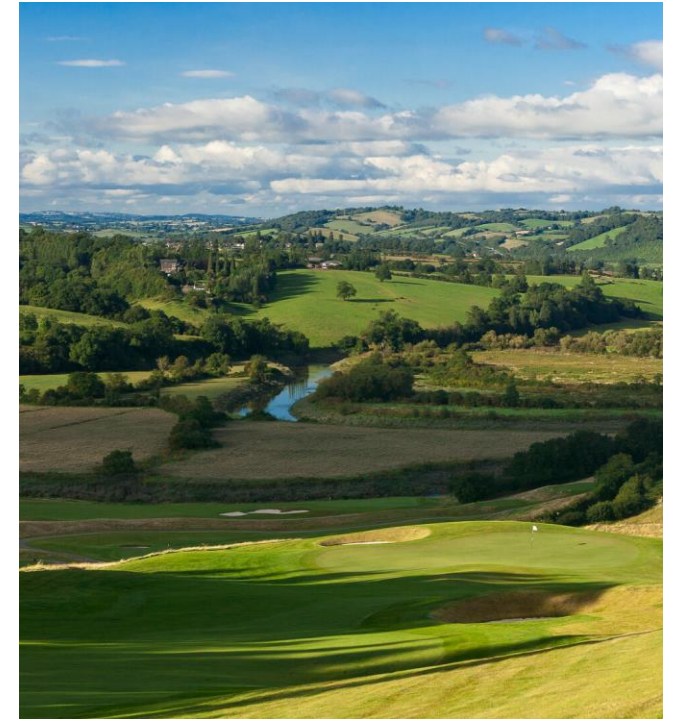
*Thank you for listening– we hope to work
with many of you in 2022 and beyond*

MODERN SLAVERY IN SUPPLY CHAINS



HANNAH LERIGO-STEPHENS,
BUSINESS LIAISON MANAGER,
STRONGER TOGETHER

CCF EVENTS COMING SOON....



<https://www.coldchainfederation.org.uk/events/>