

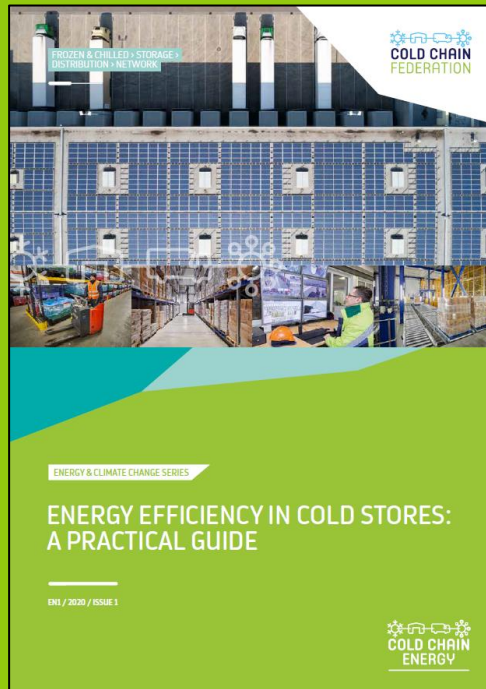


# NET ZERO PROJECT

Tom Southall, Policy Director

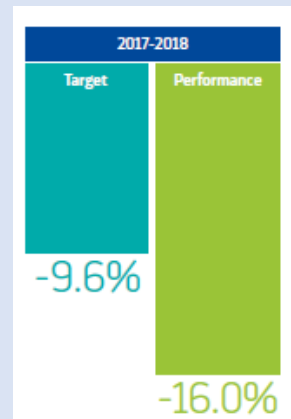
# LEADERSHIP IN ENERGY AND CLIMATE CHANGE

## GUIDANCE



## POLICY

### CLIMATE CHANGE AGREEMENT



## EVENTS



COLD CHAIN  
ENERGY  
SUMMIT



COLD CHAIN  
CONNECT



# THE COLD CHAIN FEDERATION NET ZERO PROJECT

“A long term commitment to support our industry to navigate the regulatory, economic and social pressures expected from the UK Government’s pledge to have a net zero economy by 2050”

INTRODUCING.... PART ONE

# THE ROAD TO NET ZERO



- Sets out our ambition for the Net Zero project
- Outlines what we aim to achieve in our Net Zero report and the key questions which we will need to answer as an industry.
- [www.coldchainfederation.org.uk/defining-net-zero/](http://www.coldchainfederation.org.uk/defining-net-zero/)

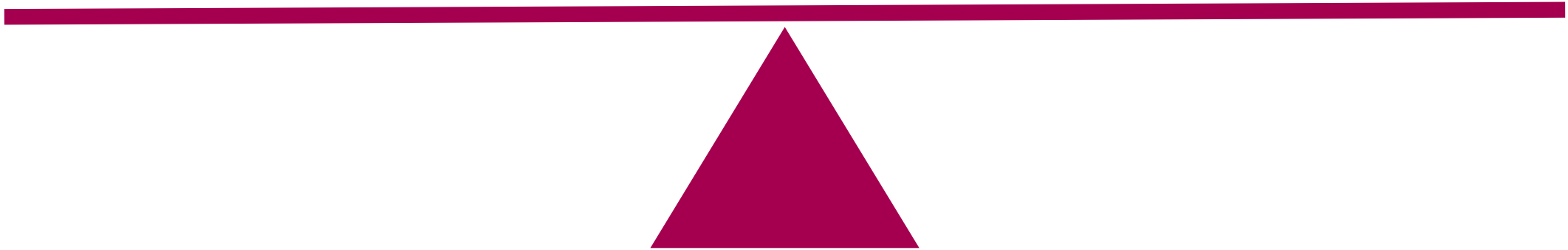


# SAVINGS VS EMISSIONS

---

Preventing and  
Reducing Post-  
Harvest Food  
Losses

Generating  
emissions from  
refrigeration

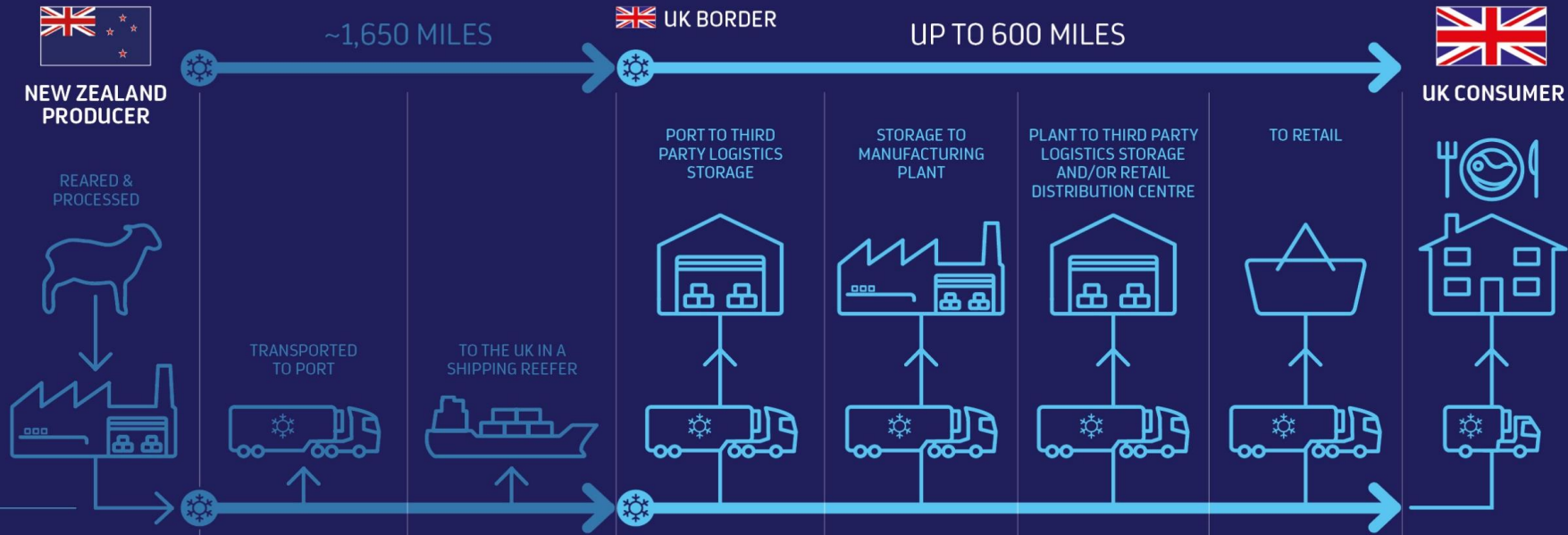


INTERNATIONAL

DOMESTIC

DEFINING THE CHALLENGE

WHAT



- Where does a business' obligations start and end? Are they responsible solely for the processes and systems they directly control? Or within the wider supply chain?
- Can frozen or chilled storage and refrigerated transport processes be carbon neutral on their own terms (without offsetting)? Or can they only be considered in context of the whole supply chain they serve?
- How can the carbon benefits of the cold chain (e.g. reducing food waste) and linked emissions (such as haulage and manufacturing) be accounted for when assessing overall cold chain emissions?

COLD CHAIN PROCESS

Chilled processing Plant/blast freezing	Transport refrigeration unit (TRU) reefer Frozen/diesel powered	Shipping reefer (frozen/powered by ship)	TRU trailer (frozen/diesel powered) Cold store	TRU trailer (frozen/diesel powered) Chilled or frozen manufacturing plant	TRU trailer (frozen/diesel powered) Chilled or frozen cold store	TRU reefer (frozen/diesel powered) Chillers or freezers in supermarket	TRU delivery vehicles Home refrigeration Chillers or freezers in food service
---	--	--	---	--	---	---	---

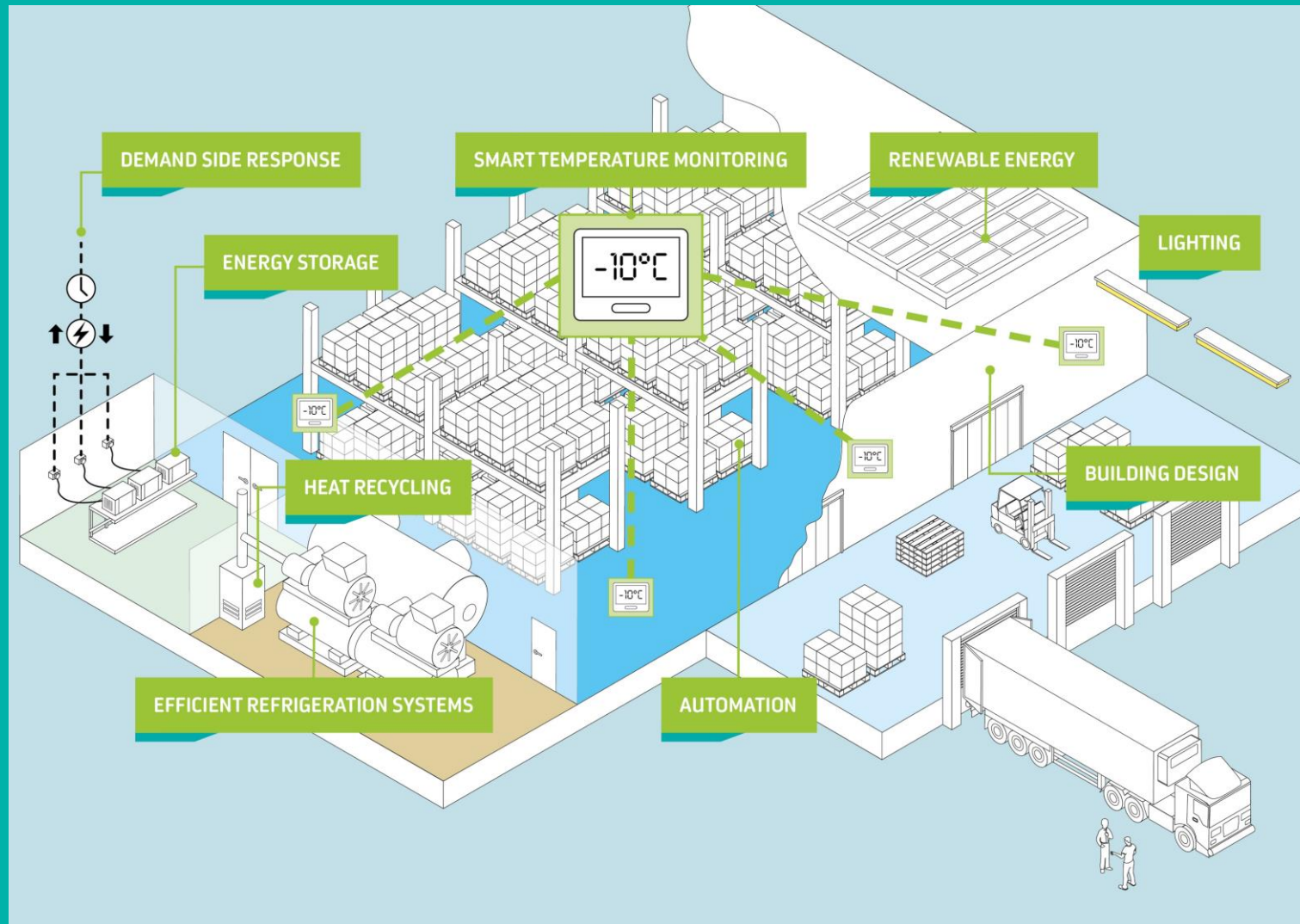
PRIMARY LINKED EMISSIONS

Agriculture Meat processing	Haulage	Shipping	Haulage	Manufacturing Haulage	Haulage	Retail Haulage	Domestic Last mile delivery Food service
--------------------------------	---------	----------	---------	--------------------------	---------	-------------------	--

RESEARCH PRIORITIES

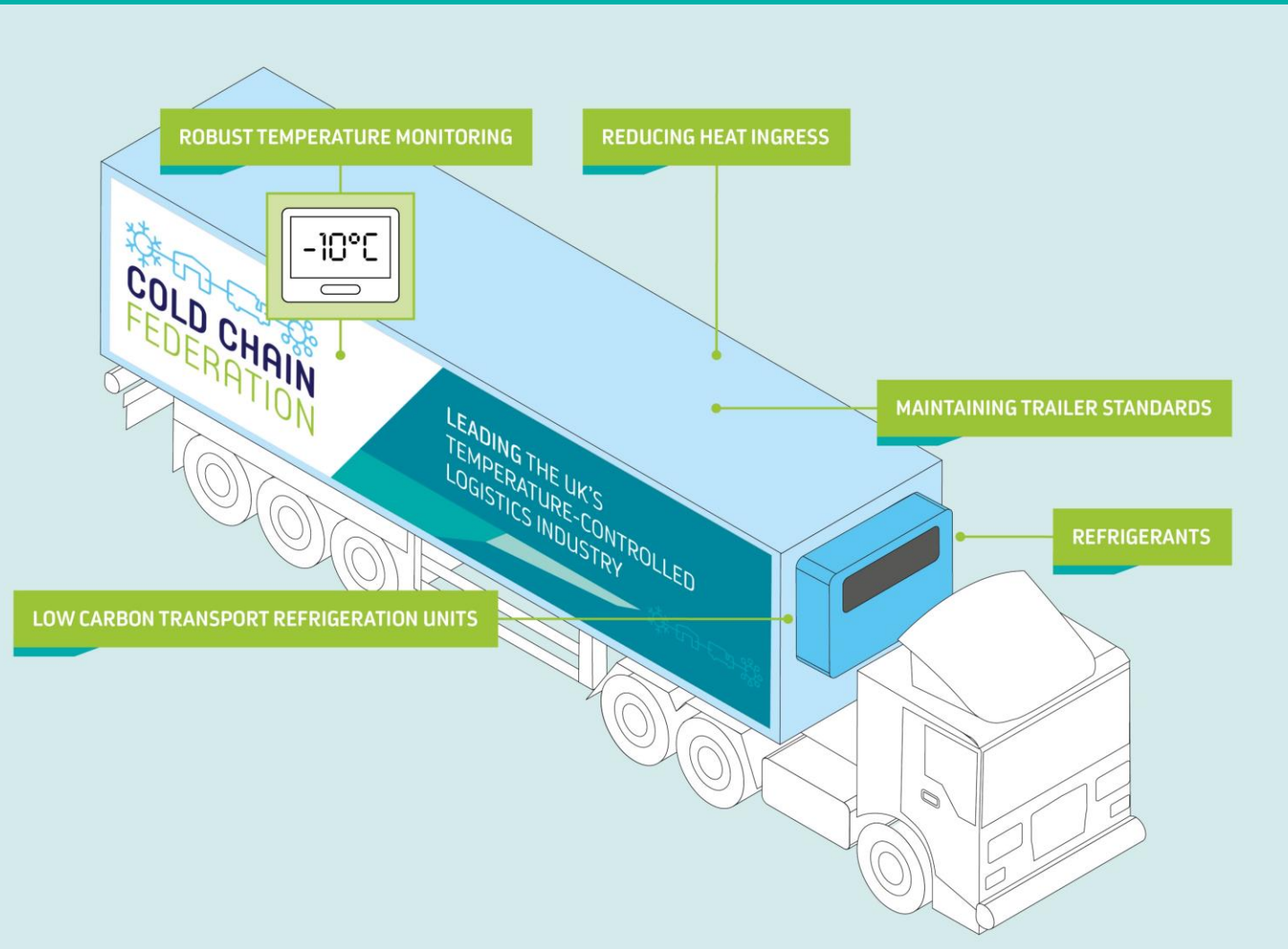
- Establishing metrics. Businesses across cold chain are deciding how and what to measure in assessing environmental performance – can shared metrics emerge within industries, across industries, national or international? If not, what will good look like?
- Mapping the technology and engineering pathways for core cold chain processes.
- Defining the current trajectory and likelihood of the UK cold chain becoming net zero by 2050.

# IMPROVING ENERGY MANAGEMENT IN COLD STORES





# REDUCING EMISSIONS IN T/C DISTRIBUTION



# RETHINKING THE SUPPLY CHAIN ECOSYSTEM

## ENABLERS

Collaboration between businesses along the cold chain will be crucial in achieving carbon reductions, but how can we move to more open and collaborative partnerships?

### Digitisation and data visibility

- Greater visibility across supply chains of temperature and other metrics will enable a better understanding of emissions, responsibility and identify areas for action.

### Consolidation and better route planning

- Advances in how we plan deliveries, where we store goods and collaboration between haulage operations will reduce vehicle miles.

### Cooperation between businesses

- Partnerships of businesses across supply chains to drive action.

### Artificial intelligence

- Potential for additional increases in efficiency across the cold chain.

## DRIVERS

There are an increasing range of regulatory, supplier-driven, and societal pressures on businesses to make their operations more sustainable. How will this impact decision making and investments?

### Government

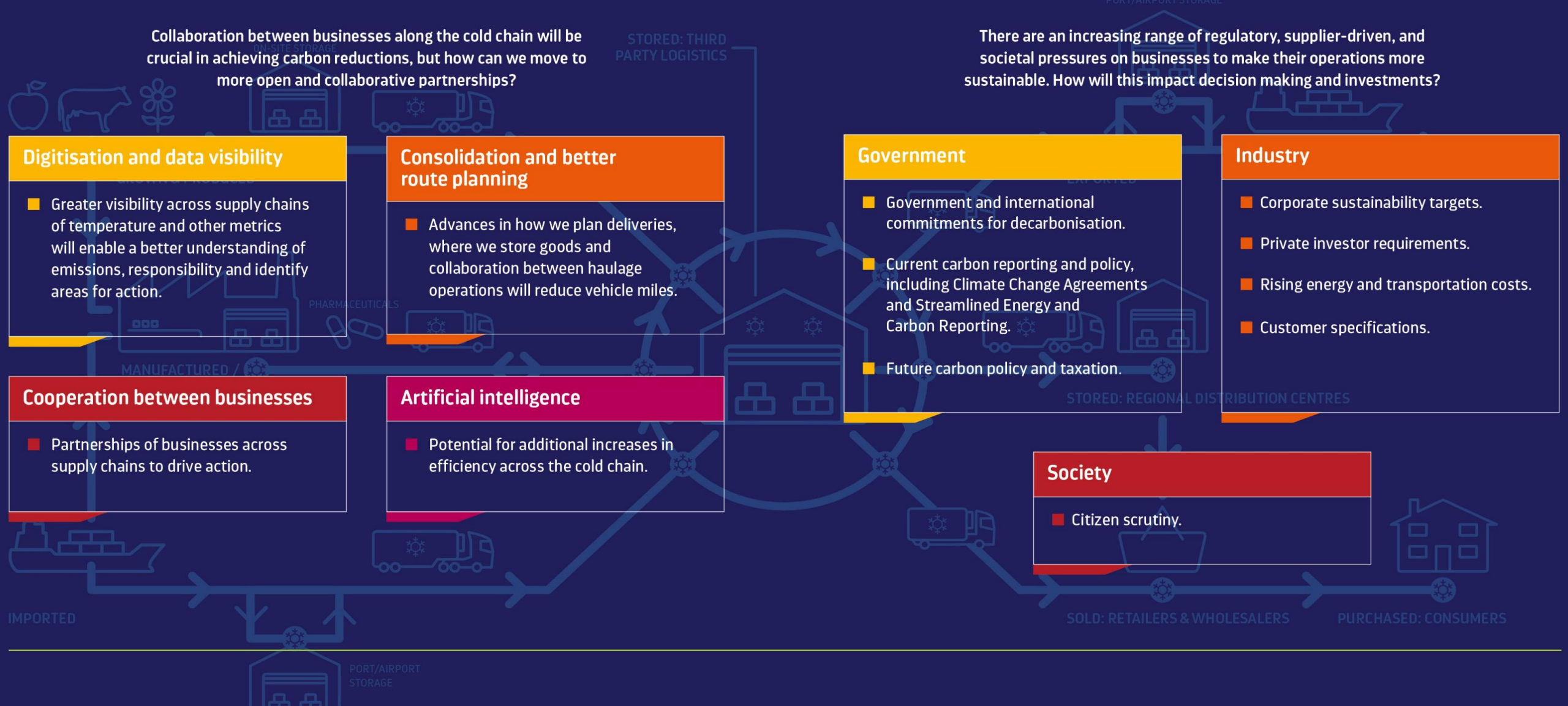
- Government and international commitments for decarbonisation.
- Current carbon reporting and policy, including Climate Change Agreements and Streamlined Energy and Carbon Reporting.
- Future carbon policy and taxation.

### Industry

- Corporate sustainability targets.
- Private investor requirements.
- Rising energy and transportation costs.
- Customer specifications.

### Society

- Citizen scrutiny.



*YOUR PROJECT:*

HOW TO GET INVOLVED & WHAT'S  
NEXT

# GETTING INVOLVED

- We are seeking to collaborate with operators, suppliers, industry bodies and Government to guide the project.
- Opportunities for participation in Net Zero roundtables and Cold Chain Connect webinars on specific themes
- Cold Chain Insight – Climate Change (March 15<sup>th</sup> – 21<sup>st</sup>)
  - 6 months to COP26 in Glasgow
  - Part Two of the Net Zero report
- Get in touch with your feedback and to register support!

