

DAY IN, DAY OUT.

WE TURN PROBLEMS INTO POTENTIAL.



DELIVERED BY

**COMPANY
SHOP
GROUP**

FEEDING FAMILIES WITH NESTLÉ

NESTLÉ UK & IRELAND HAVE PARTNERED WITH COMMUNITY SHOP TO HELP 8,000 FAMILIES WHO MIGHT OTHERWISE GO HUNGRY DURING THE SUMMER HOLIDAYS.

“Access to food is an urgent problem made worse by this global pandemic. We know that many people are struggling to feed themselves, their children and even their pets which leads to some impossible choices for a household. As schools begin their summer break today, millions of children are at risk of holiday hunger. On behalf of our 8,000 employees in the UK and Ireland, we will be helping 8,000 low-income families to access food and services over the summer.

This is only a fraction of what is required, of course. Hunger and food insecurity are serious problems that require significant government-led action across the board. Nestlé is ready to play its part and we are looking at a range of further initiatives, whether that’s increasing our regular donations to food banks or encouraging our people to use some of their 16,000 annual volunteer days to further support COVID-19 recovery efforts in their local communities.



Good Food, Good Life

The impact of COVID-19 will be far reaching but we must all take this chance to consider how we can do things differently for the future and contribute to a strong recovery. Nestlé UK & Ireland will focus its efforts over the coming months to build a more flexible and diverse workplace, adapt our business, help improve access to food, contribute to a green recovery and support youth employment.”

Stefano Agostini,
Chief Executive Officer of Nestlé UK & Ireland

WITH THANKS TO NESTLÉ’S GENEROUS £900,000 DONATION, WE ARE PROVIDING IMMEDIATE FOOD ACCESS AND SUPPORT TO THOUSANDS OF CHILDREN AND FAMILIES ACROSS THE COUNTRY.

WE DON’T WANT ANY CHILD TO GO HUNGRY

THAT IS WHY WE HAVE CHOSEN TO:

- MATCH FUND THE GOVERNMENT’S FREE SCHOOL MEAL VOUCHER SCHEME, MEANING THAT FOR EVERY £15 PROVIDED BY THE GOVERNMENT, WE ARE PROVIDING AN ADDITIONAL £15 TO HELP FAMILY BUDGETS STRETCH EVEN FURTHER
- EXTEND THIS INITIATIVE TO FAMILIES IN RECEIPT OF A MEANS TESTED BENEFIT WITH CHILDREN AGED 0 TO 5
- PROVIDE FREE LUNCH AND SNACK BAGS AND ALSO INGREDIENT BOXES WHICH INCLUDE RECIPE CARDS AND A VIRTUAL COOKING GUIDE FOR FAMILIES TO CREATE MEALS TOGETHER
- DISTRIBUTE FAMILY HAMPERS THROUGH PARTNER ORGANISATIONS
- PROVIDE FREE HOT MEALS TO CHILDREN THROUGHOUT THE SCHOOL HOLIDAY PERIOD

**COMPANY
SHOP
GROUP**

**FREE £15
VOUCHER MATCH**

Through Company Shop and Community Shop stores, we have launched an initiative to help stretch family budgets even further during the school summer holidays. Every week we will be matching the school meal £15 voucher with an additional £15 voucher.

**How to support
Community Shop**

OPEN FOR MORE

It's only through support from our partners that we're able to provide immediate food access to thousands of children and families around the UK at such a critical time.

MEET DEBBIE AND DAVE...
and let them explain to you about how the Community Shop Model works...

Click play to watch the video

COMPANY SHOP GROUP

HELPING FAMILIES TO STRETCH THEIR BUDGETS FURTHER THIS SUMMER.

WANT TO KNOW MORE?

There is a range of ways you can support our award-winning social enterprise, Community Shop. To make a stock or cash donation please email support@companyshopgroup.co.uk or call us on 0800 211 84 84.

TURNING PROBLEMS INTO POTENTIAL

BECAUSE THERE'S MORE MONTH THAN MONEY

Over a hundred years ago Seebohm Rowntree, the son of Joseph Rowntree, helped us to recognise and name the lived experience we call poverty. That lived experience limits access to the good things that most families enjoy.

THE PAST FEW MONTHS HAVE TAUGHT US THAT THE UNTHINKABLE HAPPENS.

For any household when certain sets of circumstances collide, could be illness, bereavement, redundancy, escalating household costs, budgets that used to work get stretched to breaking point. Sadly, we know that this can affect anyone at any time for a number of reasons.

AT COMPANY SHOP GROUP, WE ARE PROUD OF OUR PARTNERSHIPS THAT OPEN UP OPPORTUNITIES FOR FAMILIES WHEN THERE IS JUST TOO MUCH MONTH LEFT AT THE END OF THE MONEY.

HERE IS SOME INSIGHT INTO THE WORK OF JUST TWO OF THE MANY GREAT ORGANISATIONS THAT WE ARE HONoured TO SUPPORT.



the coalfields
regeneration trust

The Coalfields Regeneration Trust has unveiled The Coalfields Food Insecurity Response Fund in partnership with Company Shop Group.

As part of the partnership, the Trust will provide £50,000 worth of funding to eligible initiatives that address food insecurity, which for any that are supporting families and children, Company Shop have agreed to match fund, creating a total fund opportunity of £100,000.

“SINCE LOCK-DOWN, WE HAVE SEEN AN UNPRECEDENTED DEMAND FOR FOOD BANKS AS POVERTY AND HUNGER HAS HIT. THIS IS EXPECTED TO GET WORSE AS JOB LOSSES AND HOURS ARE CUT.

BEFORE COVID-19, OUR COMMUNITIES WERE ALREADY EXPERIENCING SIGNIFICANT HEALTH INEQUALITIES, WITH THIS ADDED ADVERSITY, THEY ARE IN CRISIS AND NEED OUR HELP IN ACCESSING GOOD QUALITY, HEALTHY AND AFFORDABLE FOOD.”

Andy Lock, Head of Operations for the Coalfields Regeneration Trust

COMPANY
SHOP
GROUP



COVID-19 has affected all of our lives in countless ways. But now as we strive to build a new normal and ease out of lockdown, for families facing childhood cancer, the emotional and financial lockdown will continue.

For 40 years Candlelighters has brought light to children and their families in the darkest of times, by providing emotional, practical and financial support. By adapting support services and increasing their financial grant provision, Candlelighters is ensuring families do not face these challenging times alone.



Throughout the school holidays, Company Shop Group is helping families with a child on treatment by delivering fortnightly food hampers to their door, alleviating their financial hardship and helping those finding it difficult to get to the supermarket.

One dad said,

“THE HAMPER WAS REALLY GREATLY RECEIVED, THANK YOU SO MUCH! IT INCLUDES LOTS OF THINGS WE CAN PUT TO USE LIKE PASTA, SAUCES AND SNACKS. IT REALLY HELPS”.

“IT’S THANKS TO THE FANTASTIC SUPPORT FROM ORGANISATIONS LIKE COMPANY SHOP GROUP, THAT WE ARE ABLE TO CONTINUE PROVIDING VITAL SUPPORT TO FAMILIES AFFECTED BY CHILDHOOD CANCER IN YORKSHIRE, WHO NEED OUR HELP NOW MORE THAN EVER BEFORE”.

Sue Patterson, Candlelighters Trustee

IF YOU OR YOUR BUSINESS WOULD LIKE TO DONATE OR FUNDRAISE TO SUPPORT THE WORK OF CANDLELIGHTERS PLEASE GET IN TOUCH WITH LEANNE WINDELL AT LEANNE.WINDELL@CANDLELIGHTERS.ORG.UK

DAY IN, DAY OUT.
WE TURN PROBLEMS INTO POTENTIAL.

BUILDING ON WHAT IS STRONG, NOT WHAT IS WRONG

It is great to see the National Food Strategy championing the importance of ensuring good food gets to those who need it most.

As part of the research and development of the Strategy, we were delighted to host Henry Dimbleby and his team at Community Shop Grimsby, showcasing how we can help to build stronger individuals and more confident communities through food.

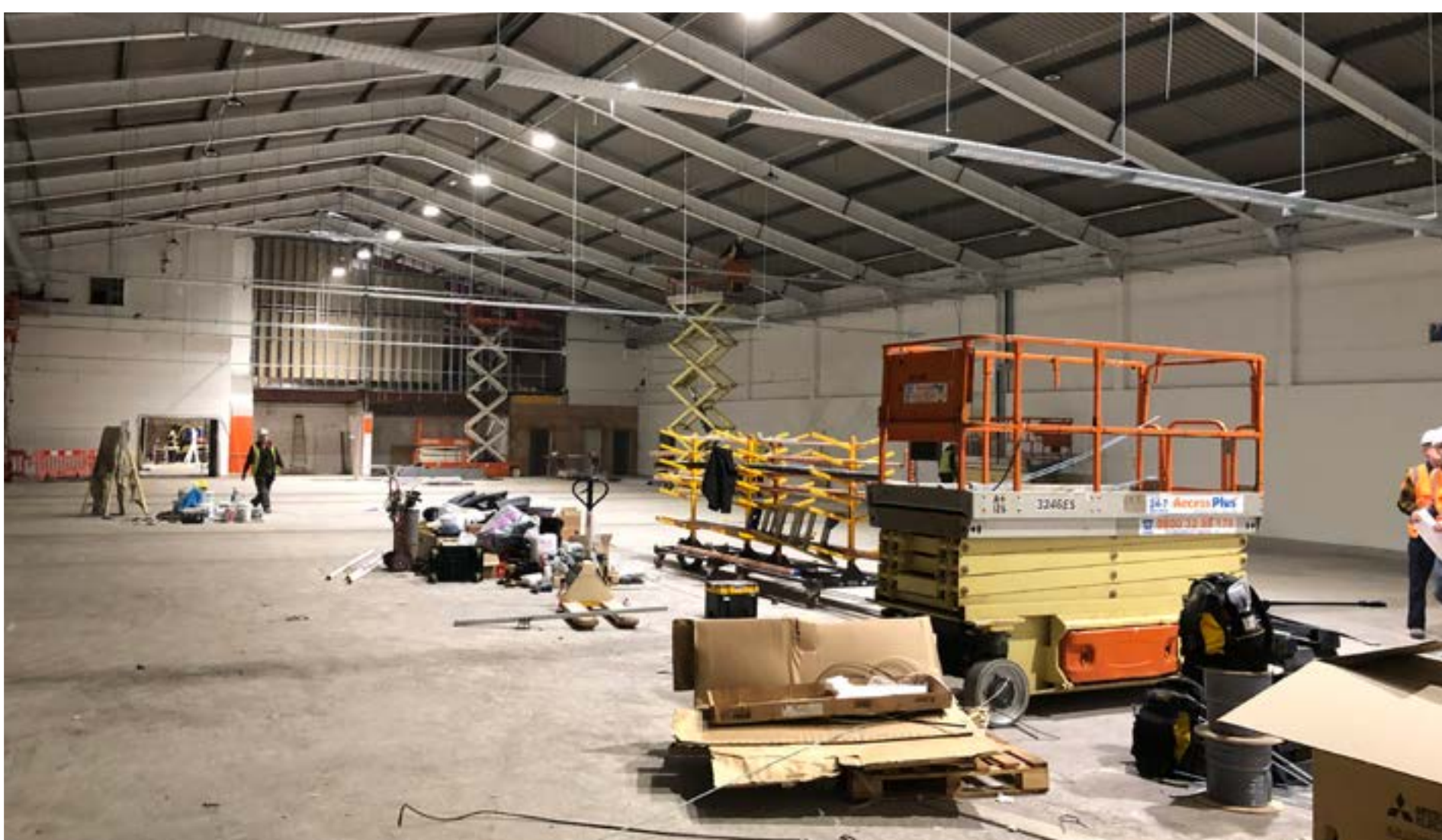
Catch us on BBC Look North [here](#) to find out more.



WATCH THIS SPACE HELLO EDINBURGH

Following last year's opening of our first Scottish site in Renfrew, we are delighted to announce that our Edinburgh store will be opening soon. Work has commenced on the site in Dumdryden and we are already delighted to be enrolling new members who will be able to shop from September. Supporting hard working key workers and providing vital food access to Community members, this store will help to stretch family budgets at a time when the only certainty is uncertainty.

THIS DEVELOPMENT IS ANOTHER IMPORTANT PART OF OUR SUSTAINABLE INVESTMENT STRATEGY, WITH OVER £12M COMMITTED TO NEW SITES DURING 2020/2021.



IF YOU ARE PART OF THE FMCG SUPPLY CHAIN AND ARE LOCATED NEAR TO ANY OF OUR COMPANY SHOP STORES, MAKE SURE THAT YOUR EMPLOYEES AREN'T MISSING OUT. CONTACT OUR MEMBERSHIP TEAM [HERE](#) TO FIND OUT HOW YOU CAN ACCESS COMPANY SHOP BENEFITS.